

These instructions cover the installation of the Kari-Tek Wire Skeg into kayaks fitted with the Kari-Tek skeg and glide box.

There are two stages involved in installing the Wire Skeg:

1. Fit the glide tube and install tubing
2. Connect the wire skeg system

Detailed instructions for each stage are given in the following sheet.

Component List

Your wire skeg kit contains the following:

- Skeg cassette assembly
- Glide tube assembly
- One length of 6mm clear nylon tube
- 3mm stainless steel wire
- One 1/8" BSP/6mm compression coupling
- Two short (M6x20) stainless steel button head set screws
- Kari-Tek Skeg Systems sticker

Tools and Materials required

The following tools are needed to fit the wire skeg into your kayak:

- 4mm allen key
- 10mm, 11mm and 13mm spanners
- Drill bits: 6mm bit
- Marker pen
- Masking tape
- Sandpaper
- Sikaflex
- ABS solvent cement
- Junior hacksaw
- Sharp knife

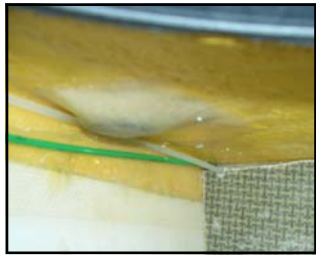
1. Fit the glide tube and install tubing

- Push the control rod (6mm diameter stainless steel rod with glide button) from the outside of the cockpit out through the hole in the glide box.
- Working from inside the cockpit, fit the grey plastic glide tube, threaded end first, over the end of the control rod. Screw the glide tube into the brass insert in the end of the glide box.



Glide tube fitted to glide box as seen from inside cockpit

- Drill a 6mm diameter hole through each bulkhead between the cockpit and the rear hatch, making sure that the run for the 6mm tubing follows a straight and neat path along the side of the hull to the compression coupling at the glide tube.

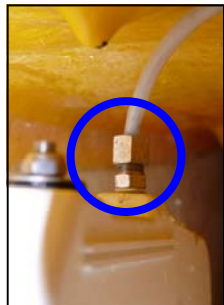


Example of pipe routing through bulkhead immediately below deck

Tip! You may be able to reuse holes from your previous skeg installation, but otherwise drill the holes high up in the corner of the bulkheads for a neat finish.

Take care when drilling the holes not to drill through the kayak deck!

- Screw the 1/8" BSP compression coupling into the hole on the top of the skeg box.
- Tip! Make sure not to lose the olive from inside the compression coupling.*



2. Connect the wire skeg system

- Working inside the rear hatch, feed the 6mm tubing forward into the cockpit, pushing the end into the rear of the glide tube.
- Feed the other end of the tubing through the

compression coupling at the top of the skeg box, allowing 9cm of tube to protrude into the skeg box, measured from the top of the coupling.

- When you are happy with the routing of the pipes, and have checked that the length protruding into the skeg box is correct, cut the tube to length. **Take care not to cut tube too short!**

- Fit one end of the stainless steel wire into the skeg blade and tighten the retaining screw (see picture right).
- Thread the wire through the 6mm tubing to the glide box end. *Tip! Temporarily remove the tubing from the skeg box, thread the wire through the skeg box first and then through the tubing. Refit the tubing into the compression coupling when finished.*



- Place the skeg cassette into the skeg box and fit the two button head retaining screws (M6x20).



- Make sure that the skeg blade is fully up and that the stainless steel wire is protruding through the stainless steel control rod at the glide box.
- Push the glide button back to the rear of the glide box, then cut the stainless steel wire to length at the front of the glide box.

- Slide the glide button forward, stopping 10mm short of the front of the glide box. Tighten up the M5 grub screw in the glide button to secure the button to the wire.



Your Kari-Tek wire skeg is now ready for use. Happy Paddling!